

SE200™ COMMUNITY CHLORINE MAKER

INSTRUCTION BOOKLET



MOUNTAIN SAFETY RESEARCH
4000 1st Avenue South
Seattle, WA 98134 U.S.A.
1-800-531-9531 | 1-206-505-9500

For more information contact:
www.msrgear.com
www.msrglobalhealth.com

⚠️ WARNING

- Do not drink chlorine directly from the SE200. Dilute chlorine before drinking. Failure to dilute chlorine before drinking could lead to dehydration, vomiting, and sickness.
- Do not expose eyes or skin to chlorine. Exposure to eyes or skin causes burns and irritation.
- Do not submerge in water. Device will be damaged and will stop working.
- Cover is not intended to be removed. Removing cover will expose sensitive equipment that could be damaged.
- Do not put hot water in salt brine bottle. Doing so can cause burns or damage bottle.
- Chlorine can stain clothing and other surfaces.

⚠️ DANGER

DANGER: THIS DEVICE PRODUCES CHLORINE, WHICH IS HAZARDOUS TO HUMANS AND ANIMALS. KEEP OUT OF THE REACH OF CHILDREN.

FAILURE TO HEED THESE DANGERS CAN LEAD TO SERIOUS HEALTH CONSEQUENCES OR INJURIES INCLUDING DEHYDRATION, VOMITING, SICKNESS, AND DEATH.

⚠️ WARNING

USE ONLY IN WELL-VENTILATED AREAS.

EYE AND SKIN IRRITANT: First aid: If in eyes—hold eye open and rinse slowly and gently with water for 15-20 minutes. Remove contact lenses, if present, after the first 5 minutes then continue rinsing eye. If on skin or clothing take off contaminated clothing. Rinse skin immediately with plenty of water for 15-20 minutes.

DO NOT USE SEAWATER. The SE200™ Community Chlorine Maker does not make drinkable water from salty or brackish water sources.

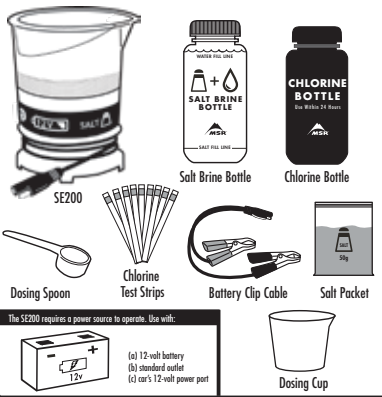
CHOOSE THE CLEANEST WATER AVAILABLE. Avoid water sources with known or suspected chemical contamination. The SE200 chlorine maker does not reduce heavy metals or chemical contamination.

WAIT THE FULL APPROPRIATE TREATMENT TIME BEFORE CONSUMING TREATED WATER.

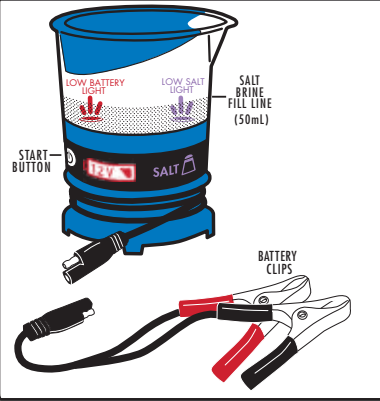
DO NOT ADD MORE WATER TO TREATED WATER: Adding water after this step will dilute the strength of the treatment solution and increase chances of consuming contaminated water.

FAILURE TO HEED THESE WARNINGS CAN LEAD TO SERIOUS HEALTH CONSEQUENCES INCLUDING DEHYDRATION, VOMITING, SICKNESS, AND DEATH.

Contents



SE200 Diagram



Troubleshooting

PROBLEM: BLINKING RED LIGHT
Low Battery
SOLUTION: Charge Battery or Check Power

PROBLEM: SOLID RED LIGHT
Dead Battery, No Power
SOLUTION: Discard Chlorine and Charge Battery or Check Power

PROBLEM: PURPLE LIGHT AND BEEP
Low Salt
SOLUTION #1: Pour salt brine out of SE200. Add more salt to brine solution and shake well. Refill SE200 with new brine solution.
SOLUTION #2: Clean with vinegar by adding vinegar to reservoir and swirling around.

PROBLEM: RED AND PURPLE LIGHTS BLINK
System Reset
SOLUTION: Disconnect the device. Pour out salt brine. Wait 5 minutes. Refill with brine.

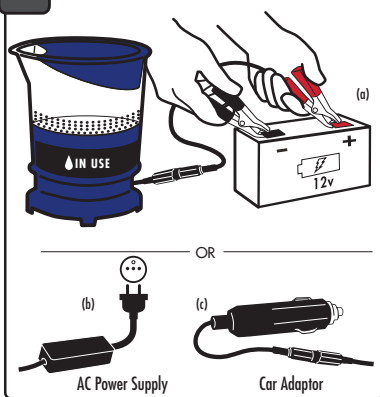
CHLORINE IS OK TO USE!

FLIP FOR INSTRUCTIONS

1 Make Salt Brine



2 Power



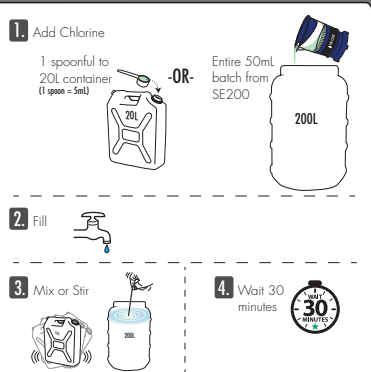
3 Fill SE200 with Salt Brine and Press Start



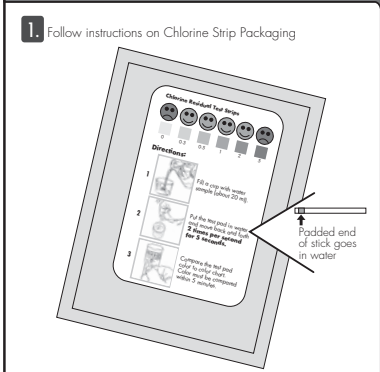
4 Make Chlorine



5 Dose Chlorine into Drinking Water Storage Container



6 Test Treated Drinking Water with Chlorine Strips



7 Determine Whether Water Has Been Treated Appropriately.

