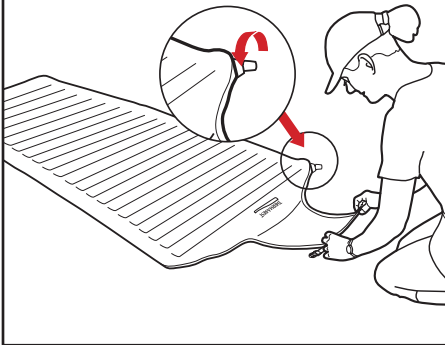


SpeedValve™ Instructions

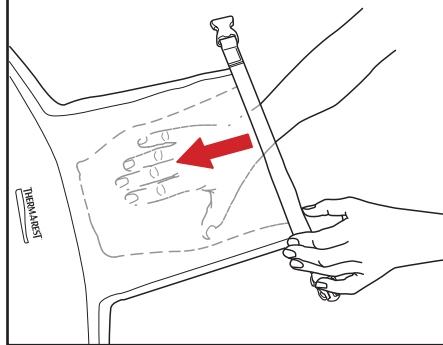
Step 1

LAY MATTRESS FLAT.
Make sure the small valve is closed.



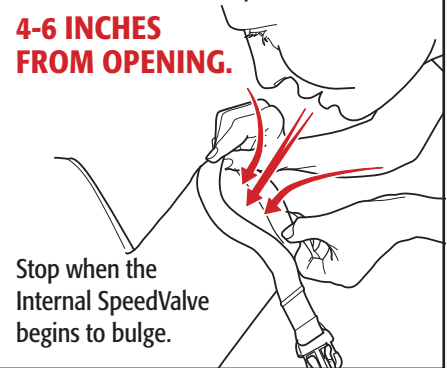
Step 2

MAKE SURE INTERNAL SPEEDVALVE IS TUCKED INSIDE.
Use hand to open and flatten it.



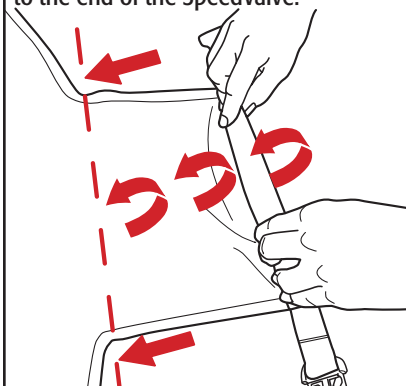
Step 3

TO INFLATE:
Blow into the opening using strong, sustained breaths with your mouth
4-6 INCHES FROM OPENING.



Step 4

PRESS STRAPS TOGETHER AND ROLL TIGHTLY 7 TIMES
to the end of the SpeedValve.



Make a tight seal like this:

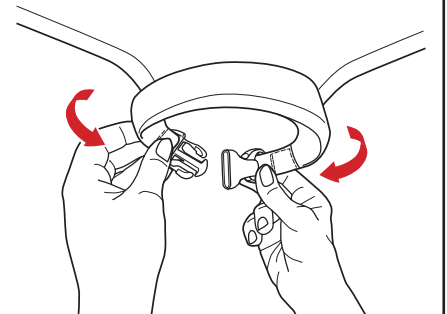


IMPORTANT: An improper seal may allow the mattress to slowly lose air through the night.

Step 5

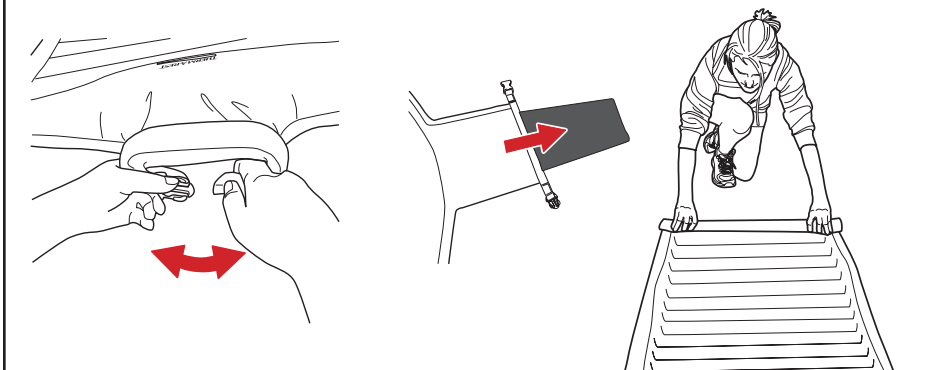
BUCKLE DOWNWARD TO CLOSE.

Use the small valve to adjust pressure if needed.



To Deflate:

UNBUCKLE AND APPLY PRESSURE TO THE MATTRESS.
The Internal SpeedValve will pop out and mattress will instantly deflate.



For more information or to view a detailed instructional video, scan this or go to:

thermarest-speedvalve.com

THERMA REST
thermarest.com

P.N. 33-899-1