

IMPORTANT
Read and understand this entire manual carefully before assembling or using this stove. Keep this manual for future reference. If you do not understand this manual or have any questions, please call Cascade Designs at 1-800-531-9531.

- This stove can produce carbon monoxide, which has no odor.
- Using it in an enclosed space can kill you.
- Never use this stove in an enclosed space, such as a camper, tent, car, or home.



! DANGER

Do not store or use gasoline or other liquids with flammable vapors in the vicinity of this or any other stove.

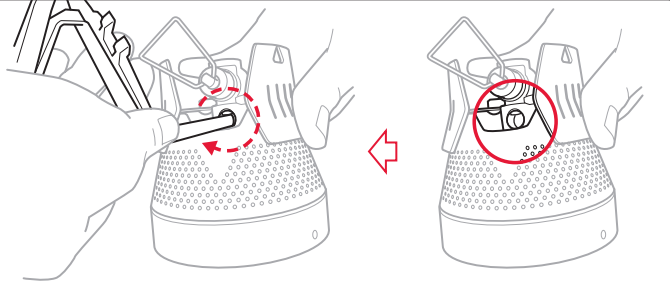
FOR YOUR SAFETY

1. Do not attempt to light stove.
2. Extinguish any open flame.
3. Disconnect from fuel canister.

If you smell gas

FOR YOUR SAFETY

- GENERAL SAFETY INFORMATION**
- To avoid being killed or seriously burned, READ, UNDERSTAND, AND FOLLOW ALL warnings and instructions in this manual before you use this stove.
- This stove is a lightweight, compact device made for cooking outdoors. Cooking outdoors is more hazardous than cooking as you normally would at home. Please consult with your local outdoor retailer to learn more about cooking outdoors. Seek qualified instruction before you venture outdoors.
- You are responsible for your own safety and the safety of those in your group. This manual is not intended to replace your good judgment.
- Fuel Canister Safety**
- This stove uses a liquid pressurized gas (LPG) canister that is highly flammable and explosive. Use only MSR® IsoPro™ or MSR Butane-Propane fuel canisters (4 ounces/113 grams or 8 ounces/227 grams) with your WindBoiler™ stove, as it may be hazardous to use other canisters. Follow this safety information:
- Listen and smell for leaking gas. Leaking gas is a serious hazard. LPG is invisible and odorless, and strong odorant additives can fade over time. Leaks are not always detectable by smell.
 - Check that the stove and fuel canister connection is secure and tight. If the connection does not lock or feel secure, or if you hear or smell leaking gas, do not use stove or canister. Move it to a well-ventilated area away from any ignition source to locate and stop the leak.
 - Never use fuel canisters that weigh more than 8 oz. (227 g) and never use canisters more than 4 inches (~10 cm) high, because oversized canisters increase stove instability.
 - Use MSR canister stand when using canisters with a diameter less than 4 inches (~10 cm).
 - Keep stove and fuel canister away from other heat sources. If you expose the fuel canister to high heat, it will explode and you can be killed or seriously burned.
 - Follow all warnings on fuel canister regarding use and storage.



Stove is now ready for use.

1. Wait 5 minutes for stove to cool.
2. Open the Flame Adjuster counter-clockwise 2 full turns.
3. Insert one leg of Fuel Canister Stand into the hole in stove's mixer tube. Inserted leg should stop against mixer tube.
4. Rotate the leg clockwise to press the brass jet downward until a click is heard.
5. Close the Flame Adjuster before reconnecting fuel canister.

RESETTING THERMAL TRIP

The WindBoiler™ stove is designed with an internal Thermal Trip mechanism, which will shut the stove off if it becomes overheated. Overheating may result from the use of incorrect cookware, storage in an excessively hot environment, damage to the burner unit, or improper lighting.

The Thermal Trip mechanism can be reset once and only if the stove is cooled to a safe temperature. Note that repeated resetting of the stove may result in damage to internal components which may cause fuel to leak and cause fire, burns, severe injury or death. If the stove's Thermal Trip is activated more than once, discontinue use of the stove and contact Cascade Designs customer service department. (See *Troubleshooting*.)

THERMAL TRIP MECHANISM

FOR OUTDOOR USE ONLY



Nominal Heat Input Rate:
6,400 BTU/h.



2009/142/EC
(51BS3524-2007)
CATEGORY: VAPOR PRESSURE
BUTANE PROPANE

Nominal Heat Input Rate:
1.87.64 kW
144 g/h.

Stove Orifice Size: 0.30 mm

NOTE: Nominal Heat Input Rate varies depending on test procedures of the particular standards agency.

! DANGER



CARBON MONOXIDE, FIRE & EXPLOSION HAZARD

There are serious hazards associated with using this stove and fuel. Accidental fire, explosion, and misuse can cause death, serious burns, and property damage. You are responsible for your own safety and the safety of those in your group. Please use good judgment.

This stove is for OUTDOOR USE ONLY. Never use this stove in a tent, car, house, or any enclosed area. This stove consumes oxygen and produces carbon monoxide, which is poisonous and has no odor. This stove can easily ignite nearby combustible materials and flammable liquids or vapors. If you use this stove in an enclosed area, you can be killed or seriously burned.

Keep stove and fuel canister away from other heat sources. Never place empty cookware on a burning stove, boil cookware dry, or burn food in cookware. Dry cookware or burned food can overheat the canister and cause it to explode or leak fuel. Never use any kind of windscreen. Never use non-WindBoiler™ cookware, because these accessories can overheat the fuel canister. If you expose the fuel canister to high heat, it will explode and you can be killed or seriously burned.

Never let children use this stove. Keep children at least 10 feet (3+ meters) away from the stove and cooking area and supervise them at all times.

READ, UNDERSTAND, AND FOLLOW ALL instructions and warnings in this manual before using this stove. Failure to follow warnings and instructions can result in death, serious burns or other injuries, and property damage.

! DANGER

Never attempt to use this stove (1) before you have read and fully understood this Instruction Manual, (2) if you are not prepared or comfortable attending to a burning or hot stove at all times, (3) if you observe leaking fuel, or (4) if you observe any condition with the stove system or in the surrounding environment that would make operation of an open-flamed device dangerous. Failure to follow these directions can cause an unsafe situation leading to fire, burns, severe injury or death.

This stove is only designed for the outside boiling of water or cooking of food—never use it for any other purpose. Use of stove in any enclosed space (e.g., tents) or purposes other than boiling water or cooking food can cause fire, burns, severe injury or death.

Never disassemble stove beyond what is specified in these instructions. Never modify stove. Disassembly or modification of stove in any manner not consistent with these instructions voids its warranty and can result in an unsafe situation where fire, burns, severe injury or death can occur.

Because of the compact nature of the WindBoiler™ stove system and its resulting height, the WindBoiler stove system may tip more easily than stove systems of lesser height. To mitigate tipping (1) use stove only with WindBoiler cookware, (2) never leave the stove unattended, (3) keep children and pets far away from stove, (4) always use stove on a solid stable, even surface, and (5) never use stove in a manner inconsistent with these instructions or contrary to its intended use. Tipping of the WindBoiler stove system can result in an unsafe situation where fire, burns, severe injury or death can occur.



MOUNTAIN SAFETY RESEARCH®

For product service and information contact

Cascade Designs, Inc.

4000 First Avenue South, Seattle, WA 98134 USA

1-800-531-9531 or 206-505-9500

www.msrgear.com



RECYCLED | RECYCLABLE

Printed on recycled paper containing 30% postconsumer waste.

33-587 | EN

INSTRUCTION MANUAL

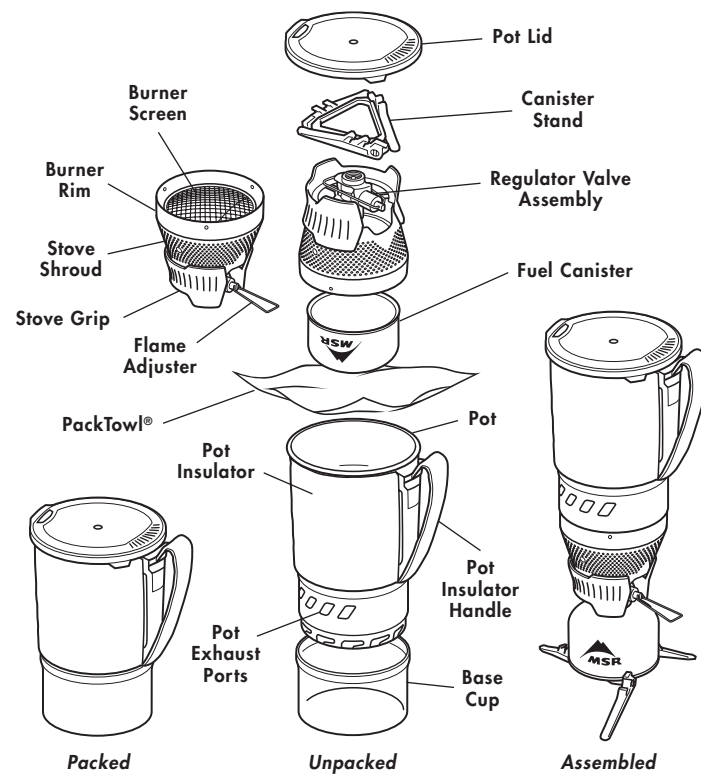


ENG

WINDBOILER™ STOVE SYSTEM

KNOW YOUR MSR® WINDBOILER™ STOVE

Please familiarize yourself with the parts of your WindBoiler stove and the following instructions before connecting the stove to its fuel canister. Never use this stove in any other way than specified in the following instructions.

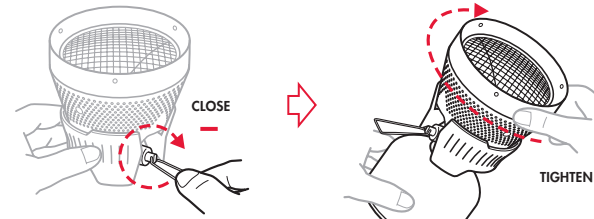


WINDBOILER™ OPERATING INSTRUCTIONS

1 CONNECT STOVE AND CANISTER

WindBoiler stove and its specially designed pot work together as an integrated unit with the fuel canister and require no other cooking accessories. This unique stove system vastly reduces cooking time and improves fuel efficiency.

- 1. Close Flame Adjuster.**
Turn Flame Adjuster clockwise.
- 2. Finger-tighten stove onto fuel canister until connection is secure.**



⚠ DANGER

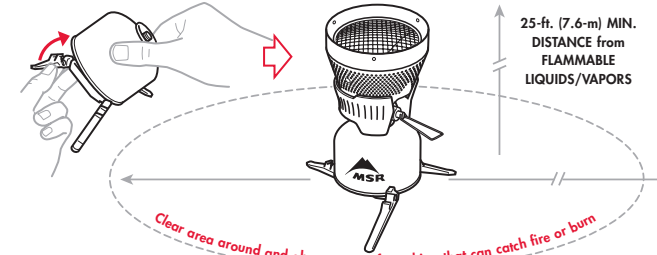
Never overtighten stove onto canister. Overtightening may damage stove or fuel canister, causing fuel to leak. Leaking fuel can cause fire, burns, severe injury or death.

Use extreme caution when using stove in temperatures below freezing. In freezing temperatures O-rings can stiffen and leak fuel. Always check for fuel leaks before and after lighting stove.

Keep children away from stove and fuel. Cascade Designs, Inc. recommends no less than 10 feet (~3 meters). Never leave a burning or hot stove unattended. An unattended stove can lead to fire and/or a situation where children, pets, or the unwary can be burned, injured, or killed.

2 SET UP STOVE

- 1. Clear cooking area of combustible materials and flammable liquids or vapors.**
- 2. Unfold the three legs of Canister Stand.**
Hook the bottom of fuel canister to two legs before attaching third leg.
- 3. Place stove assembly on a solid, stable, even surface.**
NOTE: Use MSR® Canister Stand when using smaller fuel canisters (diameter < 4 in./10.2 cm or 16 oz./450 g fuel canisters).



⚠ DANGER

Keep combustibles at least 4 feet (1.2 meters) away from the top and sides of a burning stove, or a stove that you are in the process of lighting. Keep flammable liquids and vapors at least 25 feet (7.6 meters) away from the top and sides of a burning stove, or a stove that you are in the process of lighting. This stove can ignite nearby combustible materials, flammable liquid and vapors, creating a situation where fire, burns, severe injury, or death can result.

Never attempt to light stove if Flame Adjuster is left open. If Flame Adjuster is left open, close it immediately and thoroughly ventilate area before lighting stove. Failure to ventilate area can result in an explosion that can cause fire, burns, severe injury, or death.

3 TURN STOVE ON

- 1. Hold a lit match or lighter next to the edge of the Burner Screen.**
- 2. Open Flame Adjuster until fuel begins to flow.**
Turn Flame Adjuster counterclockwise about 2 full turns.
- 3. Check for burner ignition.**
NOTE: During warm-up time, a subtle blue flame may be seen before the burner begins glowing. Once the burner mesh or Ignition Indicator wire glows or heat emanates from the burner, the burner is ready to use.

If fuel does not ignite within 10 seconds, close the Flame Adjuster, wait 15 seconds, and repeat substeps 1-3 above.



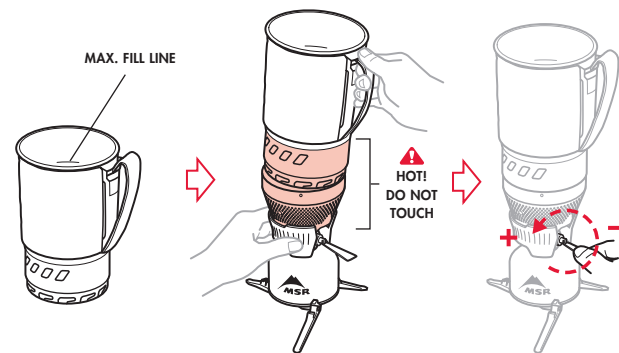
⚠ DANGER

Carefully follow all instructions when attempting to light stove. This stove contains a device designed to protect the user against misuse. If stove is misused, the device will be temporarily activated. Shut stove off until it cools to a safe temperature. See *Thermal Trip Mechanism*. Never attempt to light stove near the Flame Adjuster or with cookware in place. Attempting to light stove other than specified may cause stove to overheat, creating a situation where fire, burns, severe injury or death can result. If stove becomes inoperable, immediately discontinue use and return stove to an authorized MSR dealer.

Never place your head or body above stove while lighting or cooking. Placement of head or body above stove is an unsafe practice that can cause fire, burns, severe injury or death.

4 USE STOVE TO COOK

- 1. Add food or liquid to Pot.**
Never exceed Max. Fill Line (found inside Pot).
- 2. Place Pot onto stove by aligning it with Burner Rim.**
- 3. Hold Stove Grip with one hand and twist Pot clockwise with the other until Pot locks onto Burner.**
- 4. Turn Flame Adjuster to adjust heat.**



⚠ DANGER

Never move a burning or hot stove. Always extinguish stove and cool for at least 5 minutes before moving. Moving a burning or hot stove can cause fire, burns, severe injury or death. Never place and operate two or more stoves together. Never operate stove with empty or dry cookware. Never use non-WindBoiler cookware, reflectors, or diffusers. Misuse of stove can result in the fuel canister exploding and causing fire, burns, severe injury or death.

5 TURN STOVE OFF

- 1. When cooking is done, close Flame Adjuster.**
Turn Flame Adjuster clockwise about 2.5 full turns until it reaches a full stop.
- 2. After Burner Screen stops glowing, wait 5 minutes for stove to cool.**
- 3. Move stove assembly away from any ignition sources.**
Remove stove from fuel canister.
A small amount of gas may escape when removing stove.
- 4. Place dry PackTowl® first in bottom of Pot and then canister, upside down.** (See *Know Your MSR® WindBoiler™ Stove*.)
Place stove, upside down, in Pot.
Place Canister Stand in Pot, nested in Stove Grip.
Place lid on Pot.
Place Base Cup onto bottom of Pot.
NOTE: Ensure stove assembly and PackTowl is dry before long-term storage. Corrosion can occur when stored wet.



⚠ DANGER

Always disconnect stove from fuel canister before storing. Failure to disconnect stove from canister before storing may cause fuel to leak and cause fire, burns, severe injury or death. Always store fuel canisters in a well-ventilated location away from any possible heat or ignition source, such as water heaters, stoves, pilot lights, or furnaces, or where temperatures exceed 120 F (49 C). Storing fuel canisters near any heat or ignition source or in temperatures exceeding 120 F (49 C) can result in the canister exploding and causing fire, burns, severe injury or death.

6 USE POT TO EAT AND DRINK

- 1. Extinguish stove and remove Pot from Burner before eating or drinking.**
Wait for contents of pot to cool to a safe temperature before eating or drinking.
- 2. Hold the Pot by the handle until the Pot and its contents have cooled to a comfortable temperature.**
NOTE: Ensure stove assembly and PackTowl are dry before long-term storage. Corrosion can occur when stored wet.
- 3. The Pot Insulator may be removed from the Pot for cleaning or replacement if necessary.**
Pull latch away from pot and slide pot insulator down to remove.



⚠ DANGER

Always disconnect stove from the pot before drinking or pouring out its contents. Tipping over an ignited stove while it is still connected to its cookpot can cause flares, which may result in fire, burns, severe injury or death.

TROUBLESHOOTING

Problem

Problem	Cause	Solution
Diminished flames	Low fuel	Replace fuel canister
Stove does not light	Cold canister	Swap canisters
	Empty canister*	Replace canister
No gas flow	Activated Thermal Trip	Reset Thermal Trip (See <i>Thermal Trip Mechanism</i>)
	Flame Adjuster not fully opened	Open Flame Adjuster by turning counterclockwise

*To check if fuel canister is empty, remove stove and gently shake canister. If a splashing sound is heard, canister still contains fuel.

Stove service must only be done by an individual authorized by Cascade Designs, Inc. Please contact Cascade Designs if you have any questions about these instructions, your stove, replacement parts, or repairs:

Cascade Designs, Inc., USA - **1-800-531-9531** or **206-505-9500**

Cascade Designs, Ltd., Ireland - **(+353) 21-4621400**

www.msrgear.com

info@cascadedesigns.com